

Koala[®] IUPC

Sensor-tipped intrauterine pressure catheter (IUPC)

OBSTETRICS, GYNECOLOGY & NEONATAL
Intrapartum intrauterine monitoring,
optimized for proper placement, easy
true zeroing, small tip, 360° sensing.

The only intrauterine pressure catheter that has no electronics inside. The external transducer provides easy, true zeroing in utero.

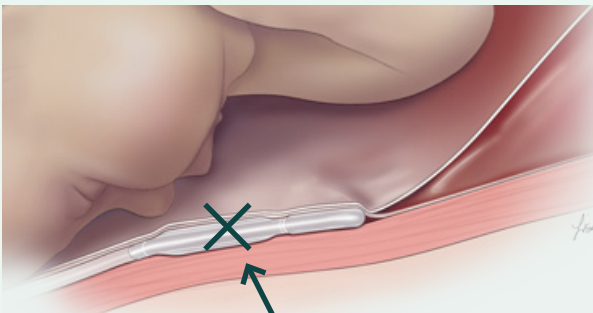
- Optimized for proper placement
- Easy true zeroing
- Smaller tip for insertion
- 360° sensing



Improper placement

Blood in amniolumen

Poor readings, high baseline, damped waveform

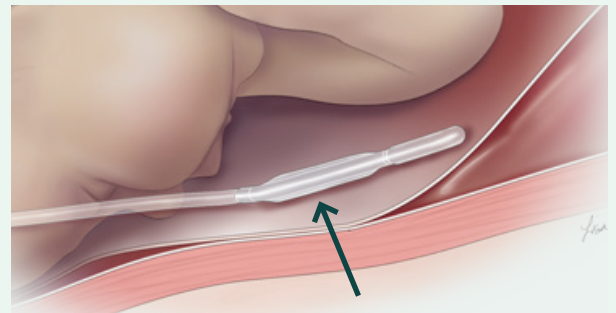


▲ Wrong: outside of amniotic space

Proper placement

Amniotic fluid in amniolumen

Crisp waveform, good baseline



▲ Correct: inside amniotic space

Koala[®] IUPC sensor-tipped intrauterine pressure catheter

- Clear lumen catheter provides visual feedback of proper placement
- With transducer in reusable cable, 'true' zero can be obtained in utero
- Koala's small, soft, malleable urethane tip is smaller than transducer-tipped catheters
- Circumferential sensor provides readings around entire tip of catheter

Koala Intrauterine Pressure Catheter

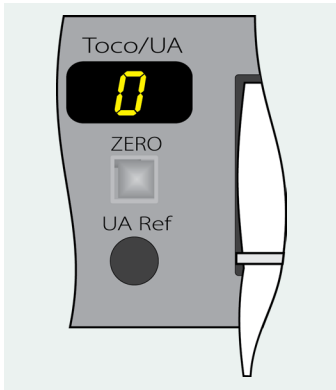
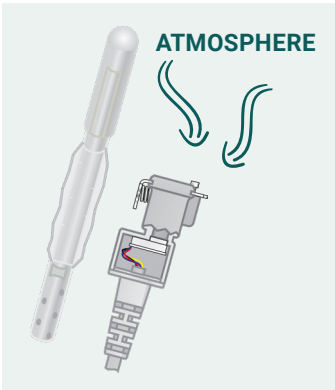
Product Support

What is Zeroing?

Zeroing is the process of establishing a baseline, or zero, on the fetal monitor from which changes in the intrauterine pressure can be measured.

What is True Zero?

True zero is obtained by pressing the fetal monitor's zero button when, and only when, the systems transducer is exposed to atmospheric pressure. Koala is the only sensor-tipped catheter that can obtain a true zero while the catheter is in utero, because the transducer is located in the reusable cable.



▲ True zero can be obtained anytime by disconnecting catheter from the cable and exposing transducer to atmospheric pressure while zeroing monitor.

Set Up and Use

01
Plug cable into Monitor
Plug reusable cable into fetal monitor

02
Insert & Pause
Advance Koala 10-14cm and pause for flashback confirmation

03
Advance
Advance Koala until double mark (45cm) is at introitus and then secure

04
Zero & Connect
Zero monitor and then connect reusable cable to Koala catheter

See Instructions for Use for full instructions, warnings, precautions and contraindications

Ordering Information

Product Description	Product Code	Box Quantity	Monitor Cables	Product Code	Box Quantity
Koala Intrauterine Pressure Catheter	IPC-5000E	10/ea	Philips 8040A (40V/V/mmHg)	IPC-5018	1 Cable
			Philips Avalon	IPC-5080	1 Cable
			All other Philips Monitors	IPC-5012	1 Cable
			GE Medical (Corometrics) All Models	IPC-5014	1 Cable
			Air-Shields (Litton) Fetascan 1400	IPC-5016	1 Cable
			Spacelabs Medical (AMS) Spacelabs 94000	IPC-5050	1 Cable
			Neovent Medical Stan S31	IPC-5060	1 Cable
			Edan Instruments, Inc.	IPC-5090	1 Cable

© 2022 Laborie. All rights reserved.



USA

T +1 800 522 6743
F +1 802 878 1122

E usmarketing@laborie.com
W laborie.com



Learn more