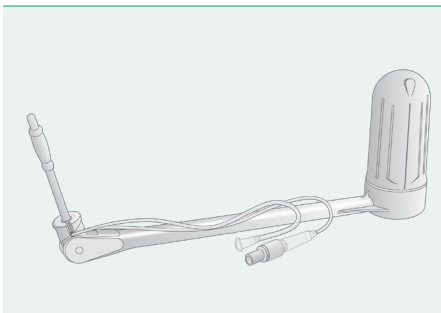


# ClearView<sup>®</sup>

## Quick Reference Guide

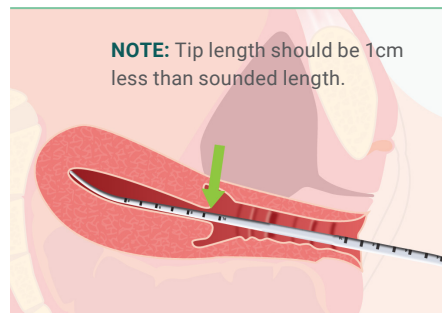
OBSTETRICS, GYNECOLOGY & NEONATAL  
Providing surgeons with optimal  
visibility and complete uterine control  
during laparoscopic procedures.

### 1. Check Device



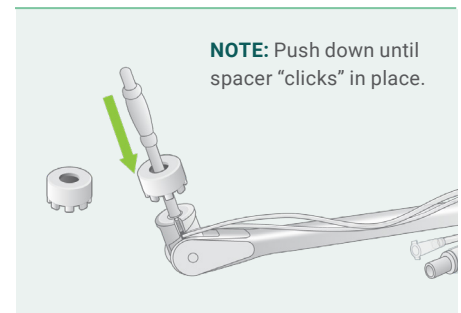
Check sterile tray integrity. Instill (10ml max) fluid to check tip balloon, then remove fluid.

### 2. Sound Uterus



Determine uterine length, select appropriate size device.

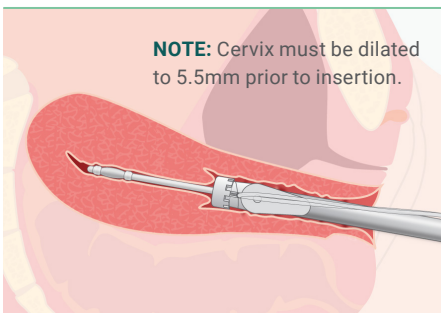
### 3. Attach Spacer\*



If needed, attach 1cm spacer.

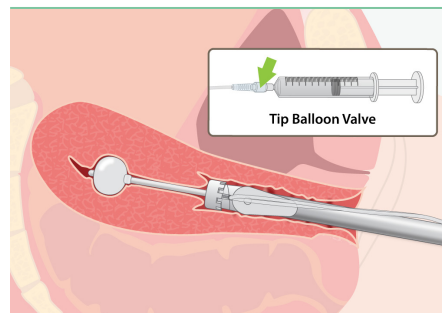
**\*Spacer is optional**

### 4. Insert Device



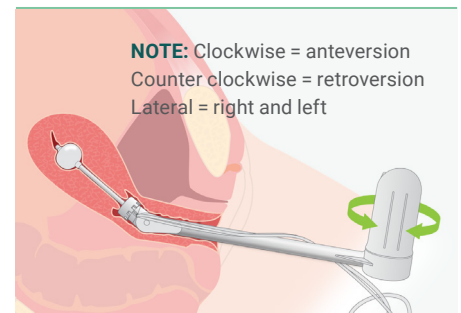
Lubricate distal tip, insert into uterine cavity until spacer abuts external cervical os.

### 5. Inflate Tip Balloon



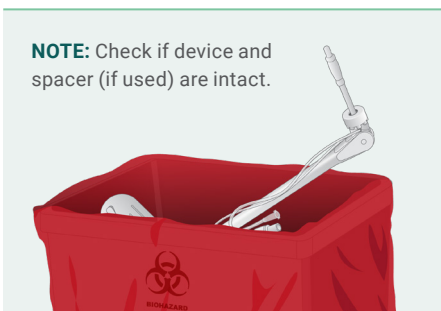
Slowly instill fluid (max 10ml) into tip balloon until device is pulled tight against cervix.

### 6. Rotate Control Handle



Rotate the control handle to manipulate the uterus.

### 7. Remove & Discard



Remove fluid from tip balloon, return uterus to natural position, remove device and discard.



See Instructions for Use for full instructions, warnings, precautions & contraindications

# ClearView<sup>®</sup> Total

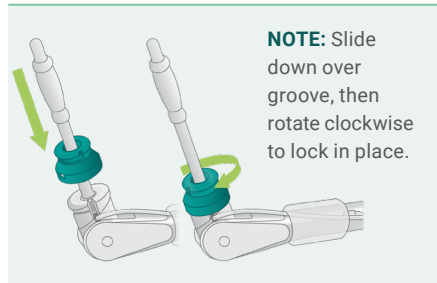
## Quick Reference Guide

### 1. Check Device

### 2. Sound Uterus

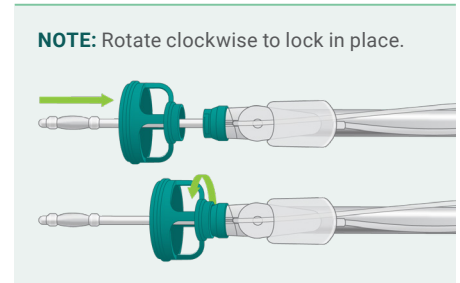
Steps 1 & 2 are the same as  
ClearView Quick Reference Guide

### 3. Attach Spacer\*



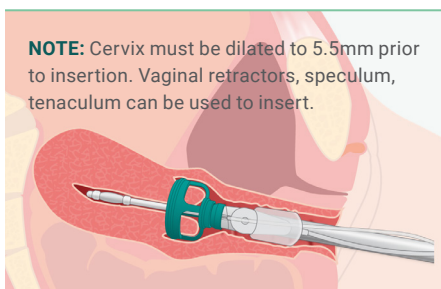
\*If necessary, attach 1cm spacer.

### 4. Attach Colpotomy Cup



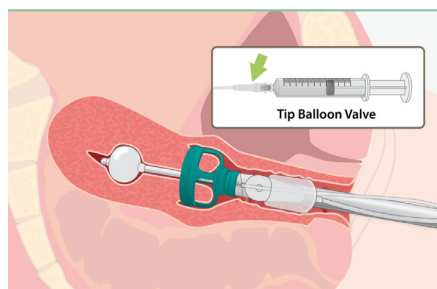
Select the correct size cup, attach cup to spacer or tip support.

### 5. Insert Device



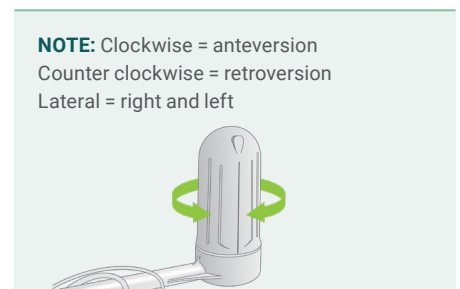
Lubricate distal tip, insert into uterine cavity until cup abuts external cervical os.

### 6. Inflate Tip Balloon



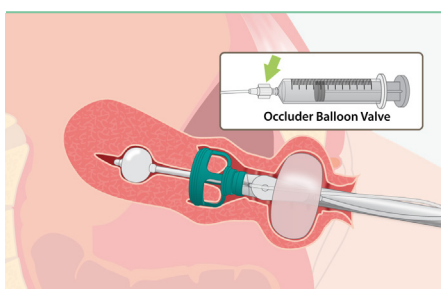
Slowly instill fluid (max 10ml) into tip balloon until device is pulled tight against cervix.

### 7. Rotate Control Handle



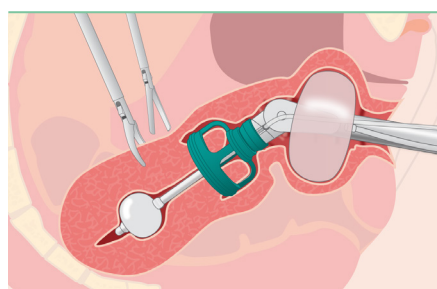
Rotate the control handle to manipulate the uterus.

### 8. Inflate Occluder



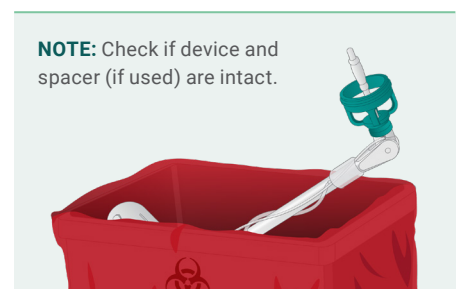
Prior to colpotomy incision, advance occluder balloon into vagina. Inflate (60-120ml fluid).

### 9. Uterine Incision



Perform uterine incision. **Use** cup as visual guide to delineate tissue. **Do not use** cup as physical guide to rest instrument.

### 10. Remove & Discard



Remove fluid from tip balloon, return uterus to natural position, remove device and discard.

See Instructions for Use for full instructions, warnings, precautions and contraindications

© 2023 Laborie. All rights reserved.

**Laborie**<sup>1</sup>

AUSTRALIA

T +07 3862 2000  
F +07 3862 2077

E orders@laborie.com.au  
W aus.laborie.com



Learn  
more

151394-0