

babyLanceTM
Safety heelstick

OBSTETRICS, GYNECOLOGY & NEONATAL
Single-use safety heelstick that offers a smooth & accurate incision for blood draws for your most precious patients.

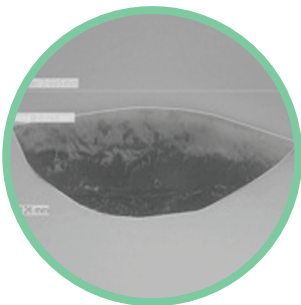
Designed for neonatal nurses...
by neonatal nurses!

The babyLanceTM safety heelstick has earned worldwide popularity for its smooth and accurate incisions, ease of use, and safety features.



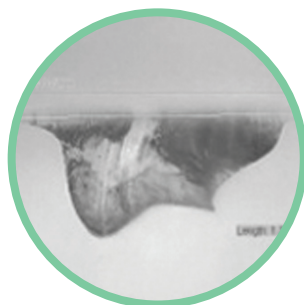
Cut Comparison

Incision profile scales are enlarged for demonstration purposes only.

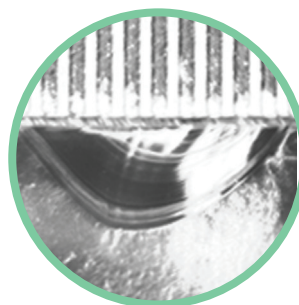


▲ **babyLance**TM
The babyLance cut profile illustrates a gently arching incision that lacks a blunt puncture mark or inconsistent, jagged cut.

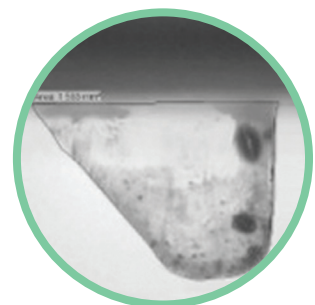
▼ **ITC Tenderfoot**^{TM1}
The ITC Tenderfoot cut profile illustrates an incision with a plunging, multi-angled puncture and a jagged, lopsided "W" pattern. (Trademark of International Technidyne Company)



▼ **Cardinal gentleheel**^{TM2}
The Cardinal Health gentleheel profile illustrates an incision with an angular initial puncture, followed by an increasingly deep arc. (Trademark of Cardinal Health, Inc.)



▼ **BD Quickheel**^{TM3}
The BD Quikheel cut profile illustrates an incision with an initial blunt puncture followed by a slicing action. (Trademark of Becton, Dickinson and Company)



A Family of Sizes
A comprehensive offering of incision depths designed to provide optimal amount of capillary blood with the least amount of trauma.

Safety First
Reduce accidental sticks/cuts with pre-loaded blade that automatically retracts after use.

Reduced Trauma
babyLance follows CLSI-LA4-A5 guidelines; providing a smooth arching incision to reduce excessive trauma to the baby.

Precision Targeting
An easy to activate trigger, incision indicators, and grip dimples help prevent slipping in your hand.

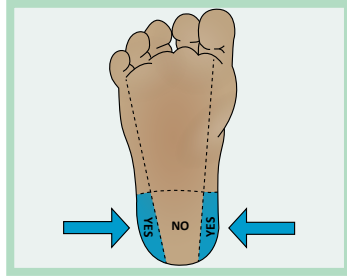


babyLance™ Quick Reference Guide

1. Select incision site

Select incision site on lateral aspects of heel, taking care to avoid calcaneus. Clean incision area of heel with an antiseptic wipe. Allow skin to dry.

TIP: Refer to sizing chart (bottom right)



2. Break off safety tab

Break off trigger lock/safety tab. Do not pull back trigger until ready for use.

TIP: Safety tab can be removed by twisting



3. Position blade slot

Position blade slot against heel with trigger facing away from user. Pull back trigger with index finger.

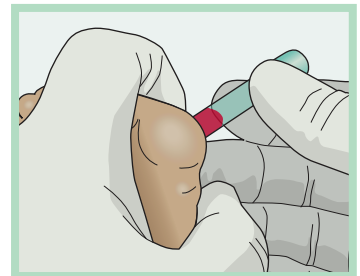
TIP: Place lancet flush on incision site. No downward force required. Do not rock device when activating trigger.



4. Wipe away first droplet

Wipe away first droplet of blood. Collect desired quantity of blood. Discard babyLance according to established sharps requirements.

TIP: It is not recommended to milk/squeeze the heel



See Instructions for Use for full instructions, warnings, precautions and contraindications.

Cut information

babyLance's proprietary internal spring activates the blade's swift pendulum action—delivering an ultra-smooth incision that complies with CLSI LA4-A5 guidelines to reduce trauma to an infant's delicate subcutaneous tissues.

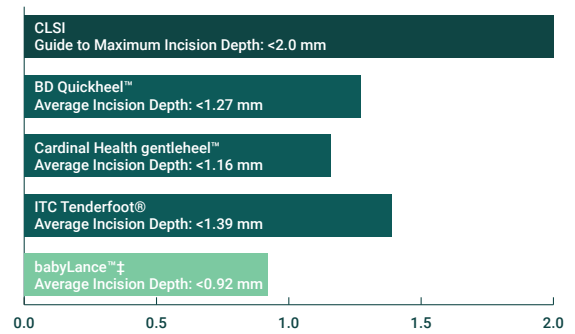
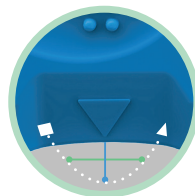
Color	Code	Indication*	Incision length ¹	Incision depth ²
Yellow ●	BLM	Less than 1000g, micropreemie	2.2 mm	0.60 mm
Pink ●	BLP	1000-2500g, preemie	3.0 mm	0.85 mm
Blue ●	BLN	2500g-9kg, birth-six months	3.0 mm	1.0 mm

*Recommendation only, use clinical judgement

Measuring arching incision

The gently arching incision (white dotted line) is measured by the maximum length and the maximum depth.

- Blade width 3.0 mm (+/-0.5 mm)
- Blade thickness 0.15 mm (+/-0.2 mm)



▲ ‡ White Paper:
Safe in Common's "10 Golden Rules of Safety"

© 2024 Laborie. All rights reserved.

Laborie¹

AUSTRALIA

T +07 3862 2000 E enquiries@laborie.com.au
F +07 3862 2077 W aus.laborie.com



Learn more