

Koala[®] IUPC

Sensor-tipped intrauterine pressure catheter (IUPC)

OBSTETRICS, GYNECOLOGY & NEONATAL

Intrapartum intrauterine monitoring, optimised for proper placement, easy true zeroing, small tip, 360° sensing.

The only intrauterine pressure catheter that has no electronics inside. The external transducer provides easy, true zeroing in utero.

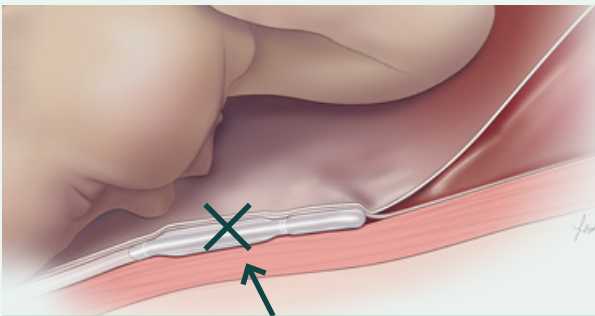
- Optimised for proper placement
- Easy true zeroing
- Smaller tip for insertion
- 360° sensing



Improper placement

Blood in amniolumen

Poor readings, high baseline, damped waveform

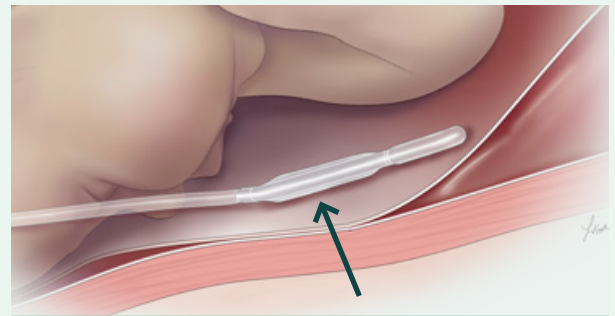


▲ Wrong: outside of amniotic space

Proper placement

Amniotic fluid in amniolumen

Crisp waveform, good baseline



▲ Correct: inside amniotic space

Koala[®] IUPC sensor-tipped intrauterine pressure catheter

- Clear lumen catheter provides visual feedback of proper placement
- With transducer in reusable cable, 'true' zero can be obtained in utero
- Koala's small, soft, malleable urethane tip is smaller than transducer-tipped catheters
- Circumferential sensor provides readings around entire tip of catheter

Koala Intrauterine Pressure Catheter

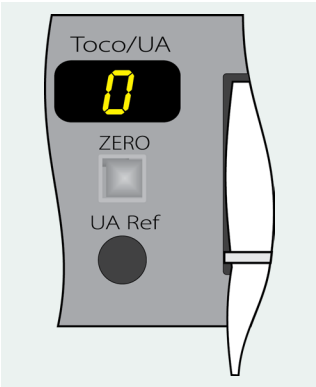
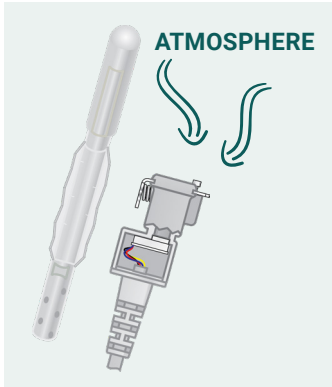
Product Support

What is Zeroing?

Zeroing is the process of establishing a baseline, or zero, on the fetal monitor from which changes in the intrauterine pressure can be measured.

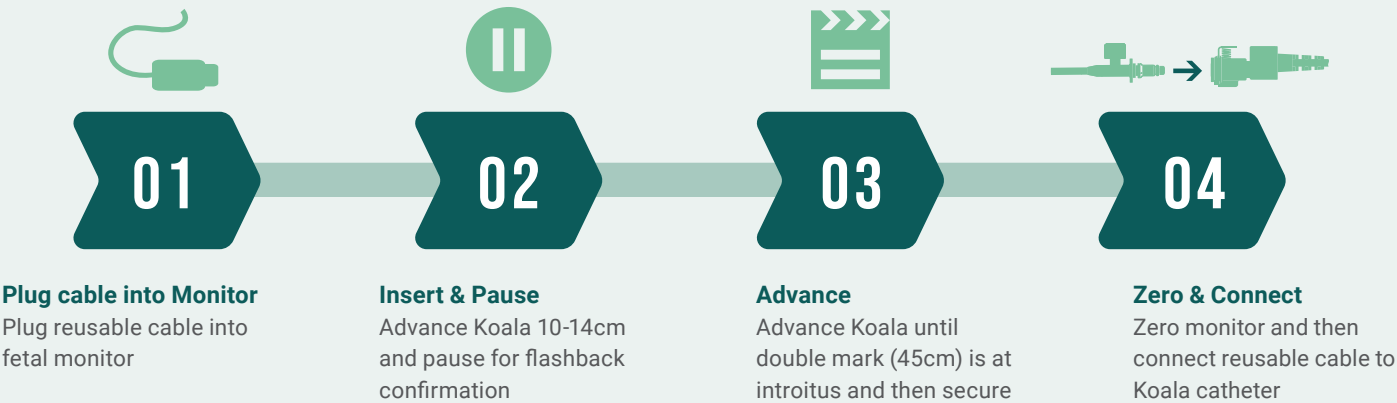
What is True Zero?

True zero is obtained by pressing the fetal monitor's zero button when, and only when, the systems transducer is exposed to atmospheric pressure. Koala is the only sensor-tipped catheter that can obtain a true zero while the catheter is in utero, because the transducer is located in the reusable cable.



▲ True zero can be obtained anytime by disconnecting catheter from the cable and exposing transducer to atmospheric pressure while zeroing monitor.

Set Up and Use



See Instructions for Use for full instructions, warnings, precautions and contraindications

Ordering Information

| Product Description | Product Code | Box Quantity | Monitor Cables | Product Code | Box Quantity |
|--------------------------------------|--------------|--------------|---|--------------|--------------|
| Koala Intrauterine Pressure Catheter | IPC-5000E | 10/ea | Philips 8040A (40V/V/mmHg) | IPC-5018 | 1 Cable |
| | | | Philips Avalon | IPC-5080 | 1 Cable |
| | | | All other Philips Monitors | IPC-5012 | 1 Cable |
| | | | GE Medical (Corometrics) All Models | IPC-5014 | 1 Cable |
| | | | Air-Shields (Litton) Fetascan 1400 | IPC-5016 | 1 Cable |
| | | | Spacelabs Medical (AMS) Spacelabs 94000 | IPC-5050 | 1 Cable |
| | | | Neovent Medical Stan S31 | IPC-5060 | 1 Cable |
| | | | Edan Instruments, Inc. | IPC-5090 | 1 Cable |

© 2023 Laborie. All rights reserved.

Laborie¹

AUSTRALIA

T +07 3862 2000 E orders@laborie.com.au
F +07 3862 2077 W aus.laborie.com



Learn
more