

EclipseTM System

First Week Guide

UROLOGY & UROGYNECOLOGY

The Eclipse System is an innovative non-surgical therapy that offers immediate results for women experiencing loss of bowel control.

Welcome to Eclipse!

- We want you to be comfortable with your Eclipse! During this first week, you should make sure the size you received is comfortable and that you're seeing an improvement in bowel control.
- You may experience some new sensations, and potentially some minor discomfort as you adjust to the device.
- **Remember:** If you are having discomfort or if the device is not helping with your bowel control, there are other sizes/pressures that can be tried to find a better match to your body. It might take a try or two, but once a good, comfortable fit is found, most women are found to be satisfied or very satisfied with Eclipse¹.

We'd love to hear from you. If you have any questions, comments, or problems, don't hesitate to call.

Eclipse Patient Liaison: _____

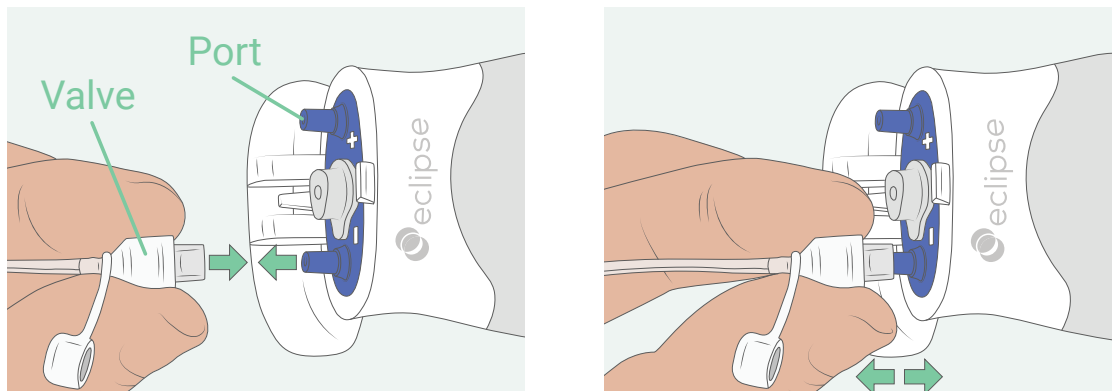
Your Doctor's Office: _____

Daily Usage Reminders

- Re-inflate the Balloon at least 3x per day
- Deflate to have a bowel movement – no need to remove for bowel movements

¹ Richter HE, Matthews CA, Muir T, et al. A Vaginal Bowel-Control System for the Treatment of Fecal Incontinence. Obstetrics & Gynecology. 2015; 125(3):540-547.

Quick Instructions



- The rubber cap that covers the valve needs to be removed to inflate/deflate.
- Inflate – Attach valve to “+” side of Pump and squeeze your Pump completely and firmly 7 to 10 times.
- Deflate – Attach valve to “-” side of Pump and squeeze your Pump completely multiple times until the pump stays collapsed.

Refer to your Patient Guide for complete instructions, including Removal & Insertion, Cleaning, Inflation, Troubleshooting, and safety information

© 2022 Laborie. All rights reserved.

Laborie¹

USA

Pease International Tradeport
180 International Drive,
Portsmouth, NH 03801, USA

T +1 800 522 6743
F +1 802 878 1122
W laborie.com