

# Eclipse<sup>TM</sup> System

## Eclipse System Patient Quick Reference Guide

### UROLOGY & UROGYNECOLOGY

The Eclipse System is an innovative non-surgical therapy that offers immediate results for women experiencing loss of bowel control.

## 1. Positions for insertion/removal

It may be helpful to try a different position, such as lying down, squatting, or sitting on a flat surface with one leg pulled towards you. (Figure A)



Figure A

## 2. Insertion

- Remove any tampons or vaginal devices
- Position: Keep the balloon facing down and to your back. The balloon is the first part to be inserted. When you look down while inserting, you shouldn't see the balloon because it's hiding under the base. (Figure B)
- Lubrication: Avoid getting lubrication on your hands and the base of the insert. Dipping only the balloon into lubrication may avoid the insert being too slippery or difficult to grasp.
- Once the insert is in place, squeeze your pelvic muscles (Kegel) to help the insert settle into place.

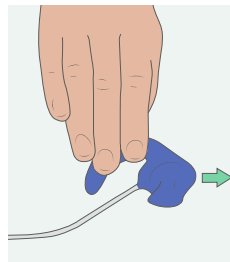


Figure B

**Note:** Lubricant should be water-based and applied directly to vaginal opening if used.

## 3. Removal

- Pull the insert out by hooking your finger around the base (Figure C). Do not pull on the tube!
- If you have difficulty reaching the Insert, it may be helpful to bear down (push) with your stomach muscles. Don't forget to relax again before you pull the insert out.

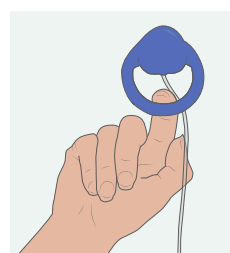


Figure C

## 4. Cleaning your insert or pump

On a weekly basis, or daily during your monthly menstrual period, you should remove your insert for cleaning with mild soap and lukewarm water. If the insert or pump become soiled, disinfect with Isopropyl alcohol (IPA). Follow the detailed instructions in your Patient Guide.

## 5. Inflating or deflating

Clean pump if soiled. To inflate or deflate, attach the valve on your insert to the correct port on the pump (Figure D).

- To deflate: Attach the valve to the negative port (-)
- To inflate: Attach the valve to the positive port (+)
- Make sure the valve is pressed all the way onto the port.
- Always squeeze the pump with slow, even squeezes to ensure proper airflow

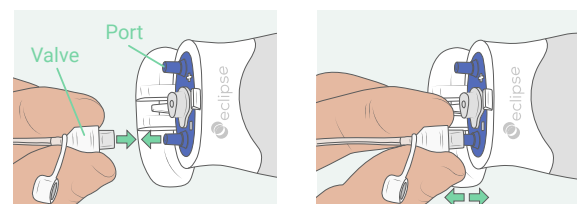


Figure D



### Reminder:

Remove Insert prior to sexual intercourse

### Daily usage reminders:

Re-inflate the balloon at least three times a day

If you are experiencing this:	Try this:
Insert does not <b>deflate</b>	<ul style="list-style-type: none"> <li>• Be sure that you are using the correct side of the pump: The deflation side, indicated by the “-” sign.</li> <li>• If you can remove the insert without deflating it, do so, and attempt to deflate it.</li> <li>• You may be able to release air from the insert by separating the tube at the connector. There is a small plastic connector along the length of the tube. The tube can be separated here using a fingernail to push the tubing off one side of the connector. This will open the tube and allow air to escape. The tube can then be re-joined after removal.</li> <li>• If you are unable to remove the insert, and you cannot deflate it, call your healthcare provider.</li> </ul>
Insert does not <b>inflate</b>	<ul style="list-style-type: none"> <li>• Be sure that you are using the correct side of the pump: The inflation side, indicated by the “+” sign.</li> <li>• First remove the insert, and then attempt to inflate. If it inflates and deflates normally, re-insert and try to inflate normally.</li> <li>• If, after removal, it does not inflate/deflate normally, contact the healthcare provider who provided you with the Insert.</li> </ul>
You cannot reach the insert for removal	<ul style="list-style-type: none"> <li>• Relax and try a different position. (See Figure A)</li> <li>• Bear down (push) with your stomach muscles.</li> <li>• Do not pull on the tube as it may tilt the insert further away from your reach.</li> <li>• Contact your healthcare provider.</li> </ul>
The insert feels unusually uncomfortable	<ul style="list-style-type: none"> <li>• Remove the insert, try to relax, and reinsert following the insertion instructions carefully. Double check to confirm that you have the insert oriented correctly, with the balloon facing down and towards your back.</li> <li>• If you experience any of the following, remove the insert immediately and notify your doctor: a foul odor or excessive vaginal discharge, difficulty urinating or defecating, significant bleeding not associated with menstruation, or any new onset or worsening pelvic pain or discomfort.</li> </ul>
Difficulty connecting the pump to the valve	<ul style="list-style-type: none"> <li>• Ensure there is no lubricant or other material on the pump ports or on the valve. Wipe the “-” and “+” ports on the pump and valve using a lint free wipe and 70% IPA (sometimes labeled as “rubbing alcohol”, check ingredients to ensure it contains 70% IPA). If the pump or the valve become soiled, clean and disinfect per Section 5, Maintenance and Cleaning in the Eclipse System Patient Guide.</li> </ul>

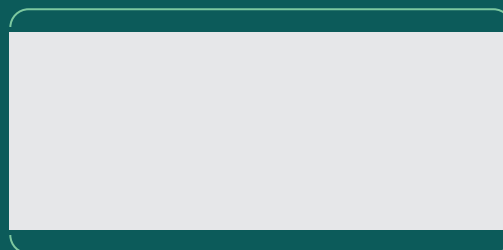
Refer to your Patient Guide for complete instructions, including Removal & Insertion, Cleaning, Inflation, Troubleshooting, and Safety Information.

© 2022 Laborie. All rights reserved.

**Laborie**<sup>1</sup>

USA

Pease International Tradeport, T +1 800 522 6743  
 180 International Drive +1 802 878 1122  
 Portsmouth, NH 03801 USA W laborie.com



Learn more