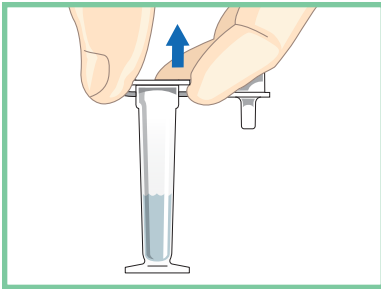


# ROM Plus<sup>®</sup>

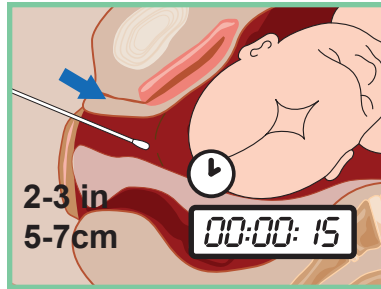
## Quick Reference Guide - Sample Collection

OBSTETRICS, GYNECOLOGY & NEONATAL  
Accurately testing for proteins found in cervicovaginal secretions to diagnose ruptured fetal membranes.



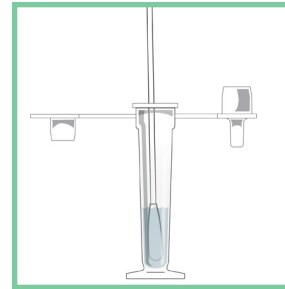
### 1. Prepare Test

Remove ROM Plus contents from packaging. Holding buffer vial in upright position, remove shipping cap and set it aside.



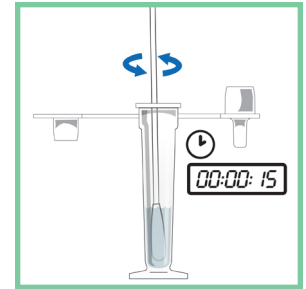
### 2. Collect Sample

Remove sterile swab from package. Insert the swab tip into the vagina 2-3 inches (5-7 cm). Withdraw the swab after a minimum of 15 seconds.



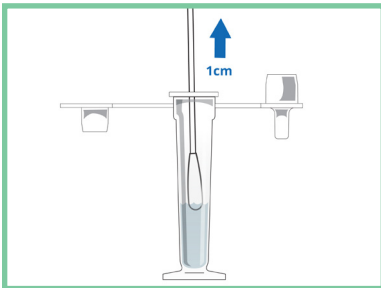
### 3. Place swab tip

Place the swab tip into the vial.



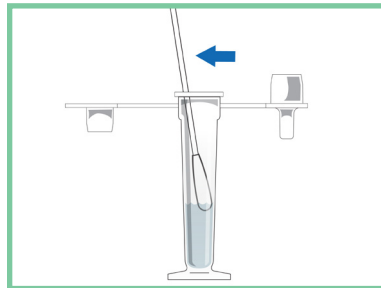
### 4. Mix

Mix the swab in the buffer solution for 15 seconds.



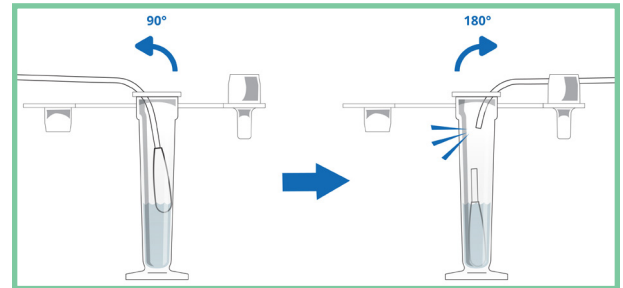
### 5a. Lift swab

Lift swab 1 cm from the bottom of the vial.



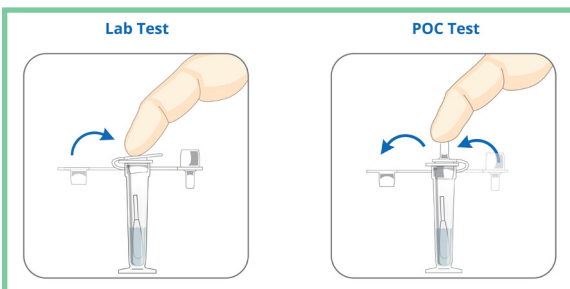
### 5b. Press swab

Press the swab stick against the rim of the vial opening.



### 5c. Bend swab

Bend the swab stick 90 degrees in the forward direction and then 180 in the reverse direction.



### 6. Leave tip in vial, dispose of remaining swab stick

#### Lab Test

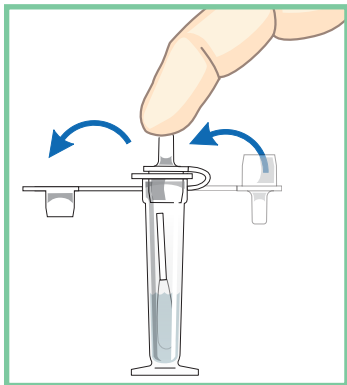
If reading test in a lab, place shipping cap back on vial and send to lab.

#### POC Test

If using test POC, place dropper cap on vial.

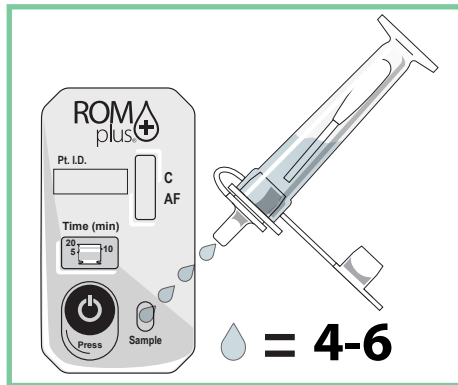
# ROM Plus<sup>®</sup>

## Quick Reference Guide - Sample Testing



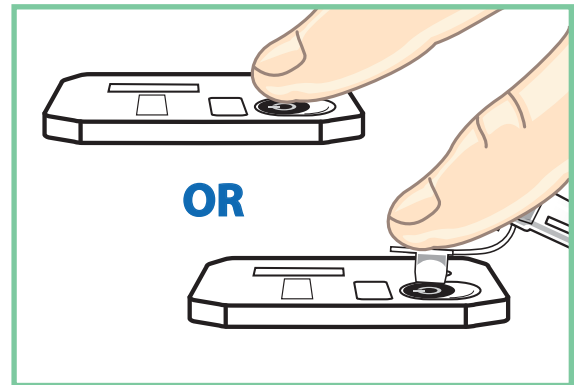
### 1. Place Dropper Cap

Replace shipping cap with drop dispenser cap.



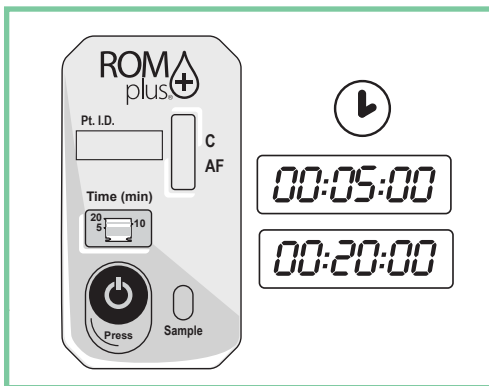
### 2. Place Sample into Cassette

Remove ROM Plus cassette. Add 4-6 drops of sample/buffer solution to the sample well on the test cassette.



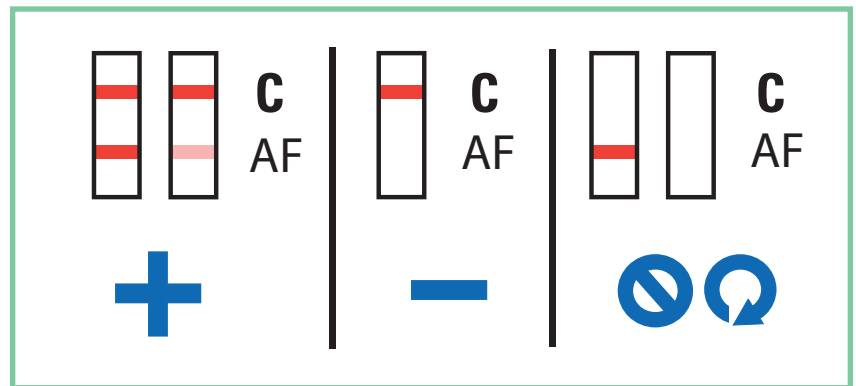
### 3. Start Timer

Start timer by firmly pressing and rolling thumb over the timer button, or use the lid on the vial. Timer has been activated when you see dark blue dye in window.



### 4. Wait 5-20 Minutes

A positive test result may be visible early (within 1-3 minutes) or may take the full 20 minutes. Wait the full 20 minutes to confirm a negative result.



### 5. Interpret Test Results

The test is valid even if the lines are faint. Test is positive if two lines (C) and (AF) appear. If no lines are visible, or just the test line (AF) is visible, the test is invalid and should be repeated.

See Instructions for Use for full instructions, warnings, precautions & contraindications

© 2022 Laborie. All rights reserved.

# Laborie<sup>1</sup>

USA

T +1 800 522 6743  
F +1 802 878 1122

E usmarketing@laborie.com  
W laborie.com



Learn more