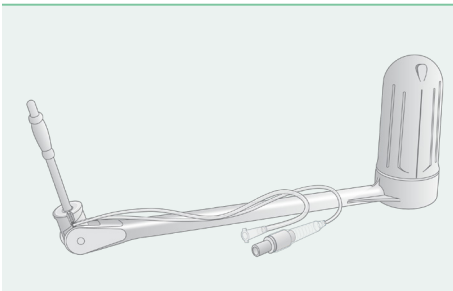


# ClearView<sup>®</sup>

## Quick Reference Guide

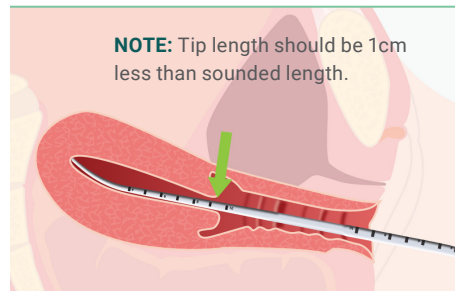
OBSTETRICS, GYNECOLOGY & NEONATAL  
Providing surgeons with optimal  
visibility and complete uterine control  
during laparoscopic procedures.

### 1. Check Device



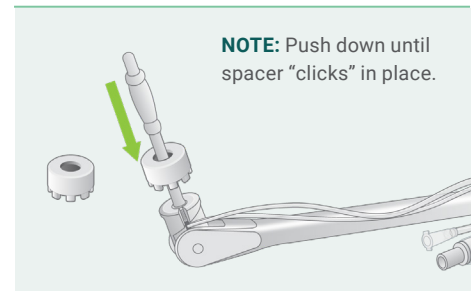
Check sterile tray integrity. Instill (10ml max) fluid to check tip balloon, then remove fluid.

### 2. Sound Uterus



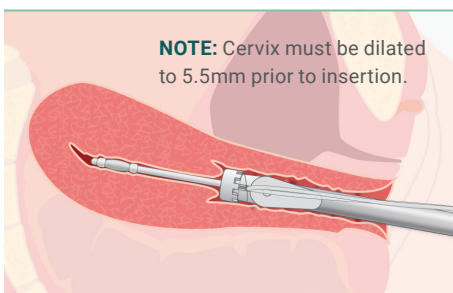
Determine uterine length, select appropriate size device.

### 3. Attach Spacer\*



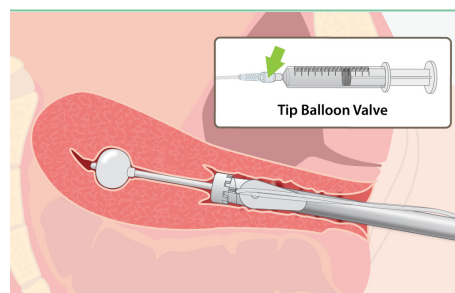
If needed, attach 1cm spacer.  
**\*Spacer is optional**

### 4. Insert Device



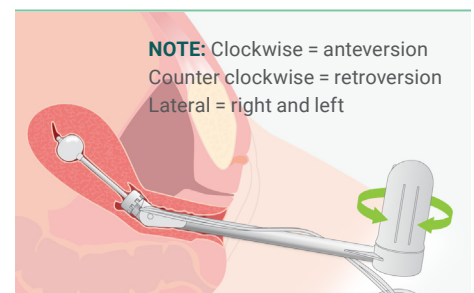
Lubricate distal tip, insert into uterine cavity until spacer abuts external cervical os.

### 5. Inflate Tip Balloon



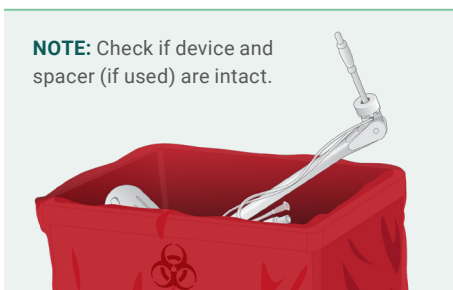
Slowly instill fluid (max 10ml) into tip balloon until device is pulled tight against cervix.

### 6. Rotate Control Handle



Rotate the control handle to manipulate the uterus.

### 7. Remove & Discard



Remove fluid from tip balloon, return uterus to natural position, remove device and discard.



See Instructions for Use for full instructions, warnings, precautions & contraindications

# ClearView<sup>®</sup> Total

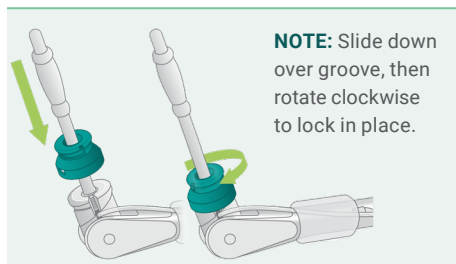
## Quick Reference Guide

### 1. Check Device

### 2. Sound Uterus

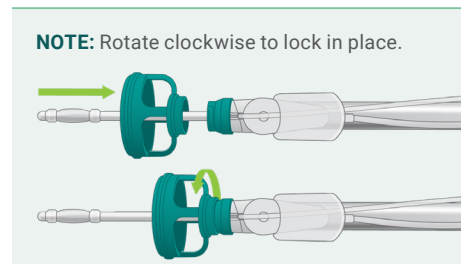
Steps 1 & 2 are the same as ClearView Quick Reference Guide

### 3. Attach Spacer\*



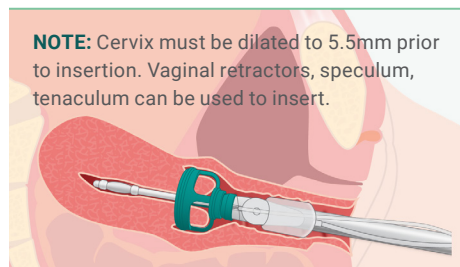
\*If necessary, attach 1cm spacer.

### 4. Attach Colpotomy Cup



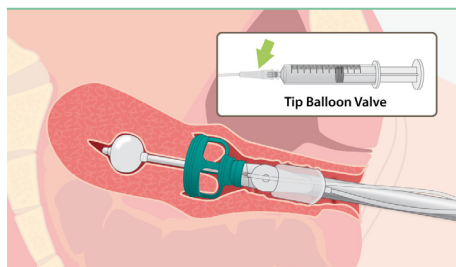
Select the correct size cup, attach cup to spacer or tip support.

### 5. Insert Device



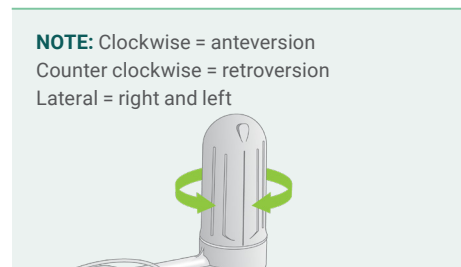
Lubricate distal tip, insert into uterine cavity until cup abuts external cervical os.

### 6. Inflate Tip Balloon



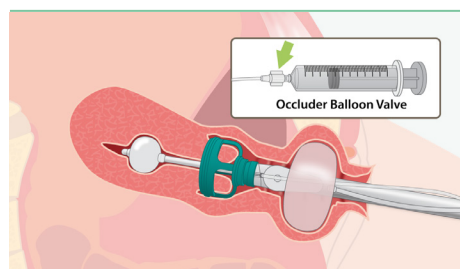
Slowly instill fluid (max 10ml) into tip balloon until device is pulled tight against cervix.

### 7. Rotate Control Handle



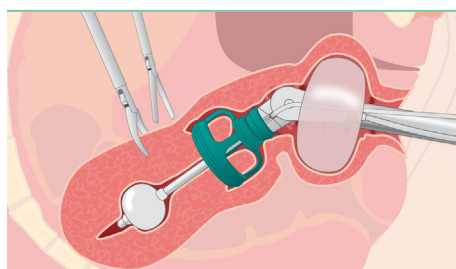
Rotate the control handle to manipulate the uterus.

### 8. Inflate Occluder

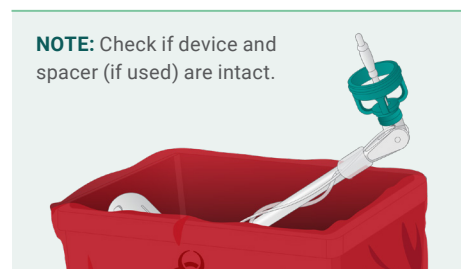


Prior to colpotomy incision, advance occluder balloon into vagina. Inflate (60-120ml fluid).

### 9. Uterine Incision



### 10. Remove & Discard



Remove fluid from tip balloon, return uterus to natural position, remove device and discard.

See Instructions for Use for full instructions, warnings, precautions and contraindications

© 2022 Laborie. All rights reserved.

**Laborie**<sup>1</sup>

USA

T +1 800 522 6743  
F +1 802 878 1122

E [usmarketing@laborie.com](mailto:usmarketing@laborie.com)  
W [laborie.com](http://laborie.com)



Learn more

100138-1