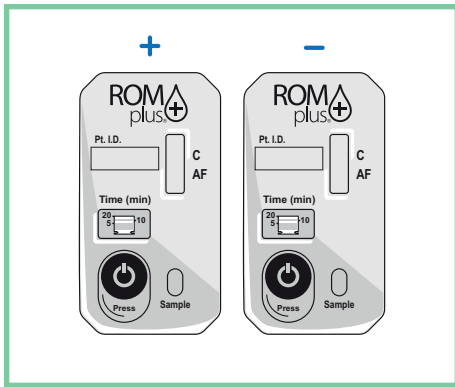


# ROM Plus<sup>®</sup>

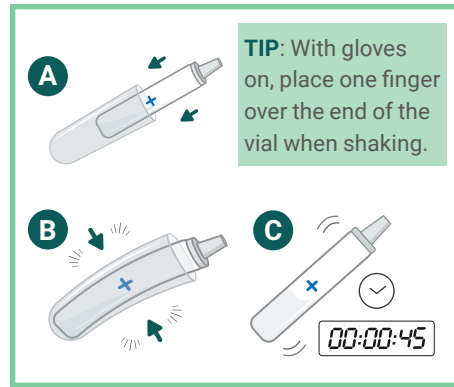
## Quick Reference Guide - Quality Control Kit

OBSTETRICS, GYNECOLOGY & NEONATAL  
Accurately testing for proteins found in cervicovaginal secretions to diagnose ruptured fetal membranes.



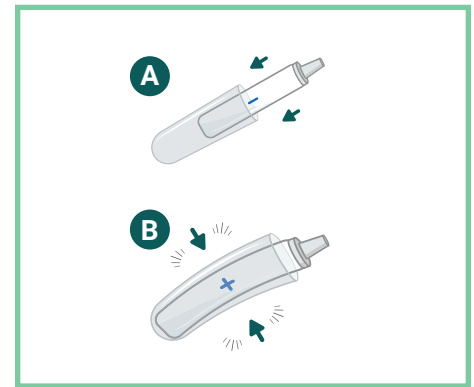
### 1. Prepare Test Cassettes

Prepare two ROM Plus test cassettes, one for the Positive Control and one for the Negative Control. Since this is a quality control test, the polyester vaginal swab and standard dropper vial should not be used.



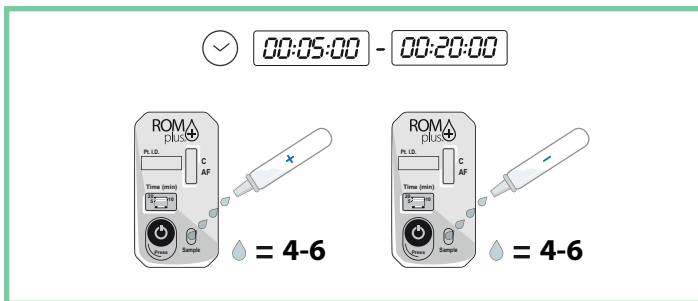
### 2. Prepare Positive Control

Remove the Positive Control vial from the foil pouch. Place the vial in the safety sleeve, gently squeeze and bend to break the glass ampoule inside. Mix the buffer with the lyophilized positive sample for at least 45 seconds. Be careful not to let the sample drip out of the vial.



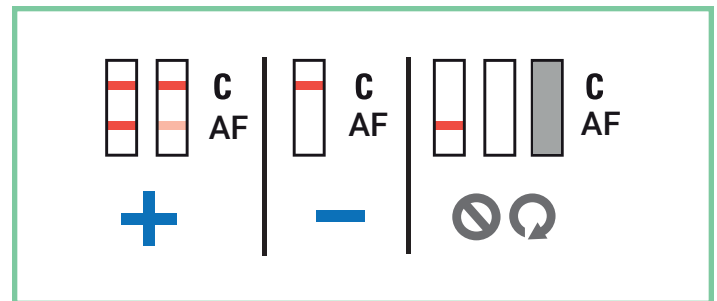
### 3. Prepare Negative Control

Place the Negative Control vial in the safety sleeve, gently squeeze and bend to break the glass ampoule inside. Be careful not to let the sample drip out of the vial.



### 4. Run Tests

Add 4-6 drops of the Negative Control solution to the cassette, do the same for the Positive Control solution cassette. Start the timers on each cassette by firmly pressing and rolling thumb over the timer button from left to right.



### 5. Interpret Test Results

Wait 5-20 minutes for test results to manifest in test window (C/AF). Only C should be visible for the negative control. Both the C and AF should be visible for the positive control. The test is positive even if the stripes are faint.

# ROM Plus® Rupture of Membranes Test

**Unique for detecting both Alpha-fetoprotein (AFP) & Insulin-like growth factor-binding protein 1 (IGFBP-1)**

- Reliable sensitivity
- Conveniently delivered
- Cost effective



## Convenient for all involved

- 15 second vaginal swab, 15 second sample mix
- Lay-flat design helps prevent sample spills
- Positive results can be achieved in minutes
- Less invasive than SSE, no speculum needed

The collection process is easier on the patient and the ease of testing is great for the techs

## Ordering information

Product Description	Product Code	Box Quantity
P.O.C Kits - box of 25 complete test kits	ROM-5025	25/box
Collection Kits - box of 25 collection kits only	ROM-6000	25/box
Lab Kits - 1 box of 25 cassettes & 1 box of 25 collection kits	ROM-6025	25/box
Quality Control - 1 Positive Control & 1 Negative Control	ROM-QC	5/box
Validation Kit - 1 box of 25 cassettes & 3 boxes of ROM-QC	ROM-7025	1 box
POC Correlation Kit - 1 box of ROM-5025 & 1 each ROM-QC	ROM-7055	1 box
Lab Correlation Kit - 1 box of ROM-6025 & 1 each ROM-QC	ROM-7065	1 box
Correlation Samples - 20 known, blinded, frozen samples	ROM-CS	1 box

© 2022 Laborie. All rights reserved.

**Laborie**

USA

T +1 800 522 6743  
F +1 802 878 1122

E usmarketing@laborie.com  
W laborie.com



Learn more

100314-1