



---

FOR DIGNITY. FOR LIFE.

---

# Corporate Presentation

---

January 2025

---

---

Laborie

Company Confidential



# Laborie by the numbers



1 Company with 4 Global Business Segments



More than 1000 Employees Globally



Annualized Revenue of \$373 Million USD



More than 10,500 Customers Worldwide



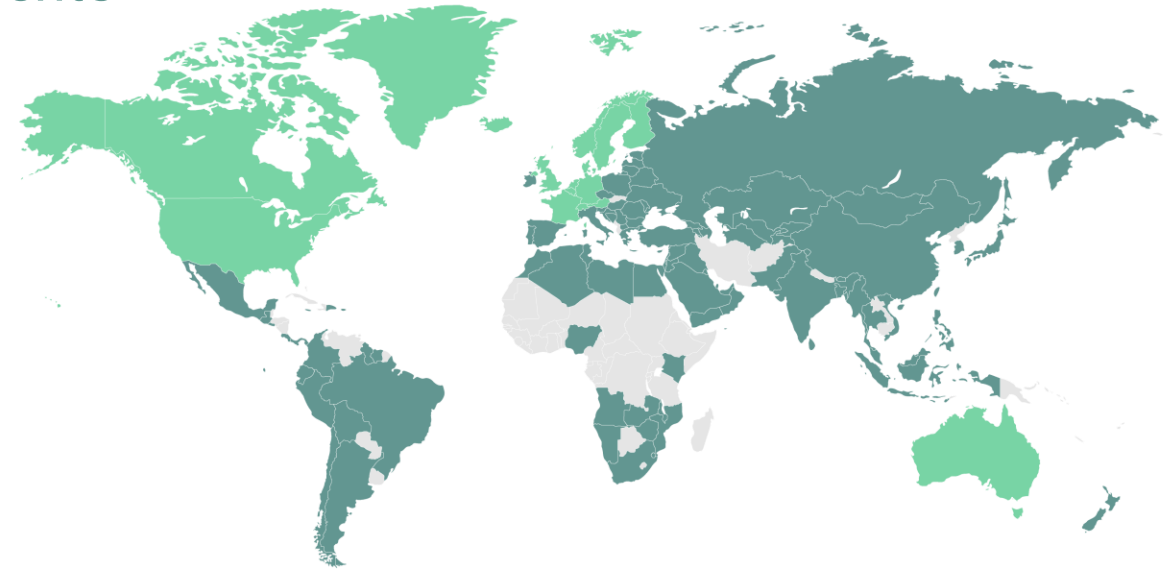
Products Sold in 110 Countries



Direct Presence in 17 Countries



8 Manufacturing & Distribution Centers



Direct Sales Force: 300+



Global Distributors: 100+

---

# Our Vision

Our Vision is to be **One** Laborie in the way we manage our business today and grow our business tomorrow...

- ✓ Financially Durable
- ✓ Healthy Work Environment
- ✓ Socially Responsible
- ✓ Value Creating
- ✓ Sustainable



---

# Our Mission

- At Laborie, we believe that great healthcare is an essential safeguard of human dignity.
- Our Mission every day is to operate as a world-class specialist medical company making and advancing technologies that preserve and restore human dignity. We do that today by helping people with pelvic and gastrointestinal conditions live normal lives, and by helping mothers and babies have safe deliveries.





# Our Values

Aspire to  
**Greatness**

**Respect all**

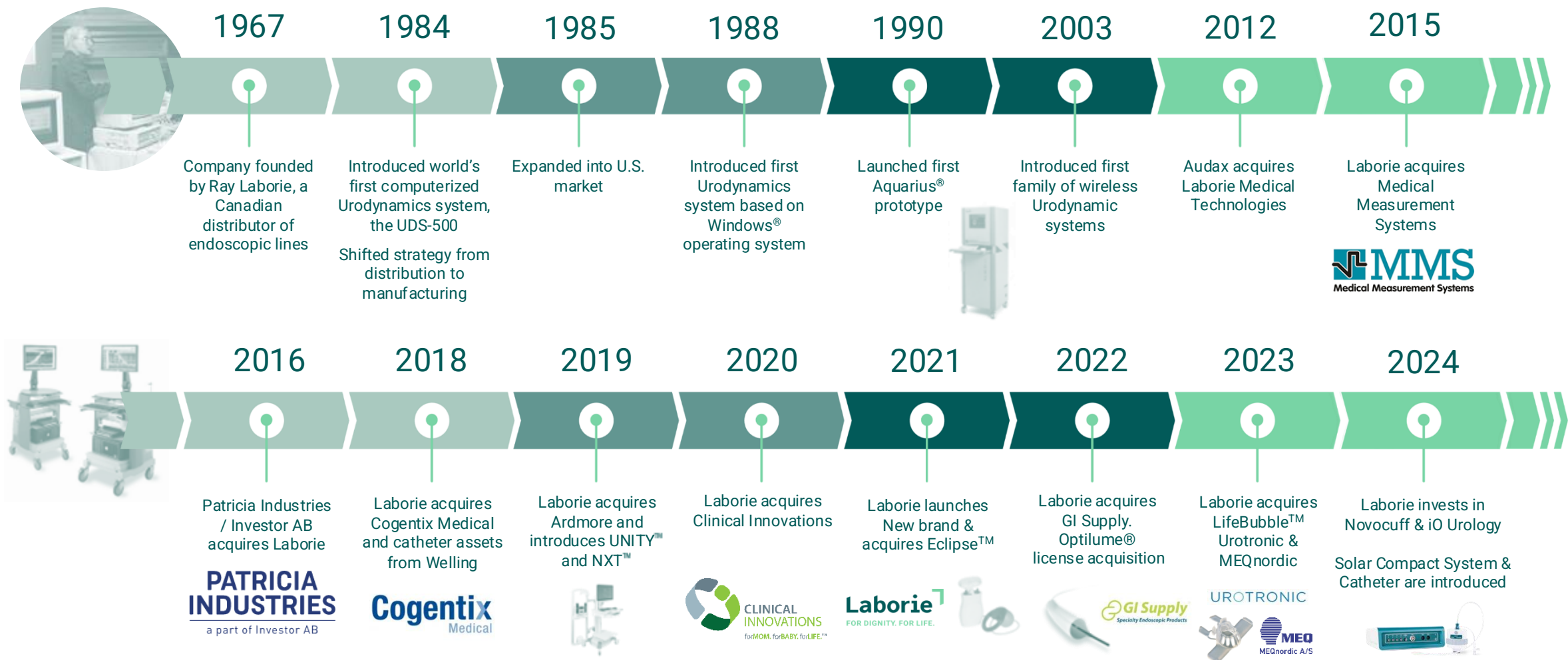
**Own it**

**Work  
together**

Persist  
**with Passion**



# Our History



# Our Owners



Commitment to giving back through its Wallenberg Foundations ~\$2.5 billion USD over the past 10 years

## investor

Investor AB is owned by the Wallenberg family

- The Wallenberg sphere spans 600k employees, \$150 billion in Sales in 180 countries
- \$50 billion in assets with substantial healthcare focus
- Long-term approach to investing

## PATRICIA INDUSTRIES

a part of Investor AB

Laborie is privately owned by Patricia Industries, a division of Swedish-based Investor AB

- Long-term investment approach in market-leading, best-in-class private companies
- Leverage people, network and capital
- Operate with the highest ethical standards

Laborie<sup>7</sup>

piab

ERICSSON

ABB

sobi  
SWEDISH ORPHAN BIOVITRUM

Mölnlycke®

sarnova

Nasdaq

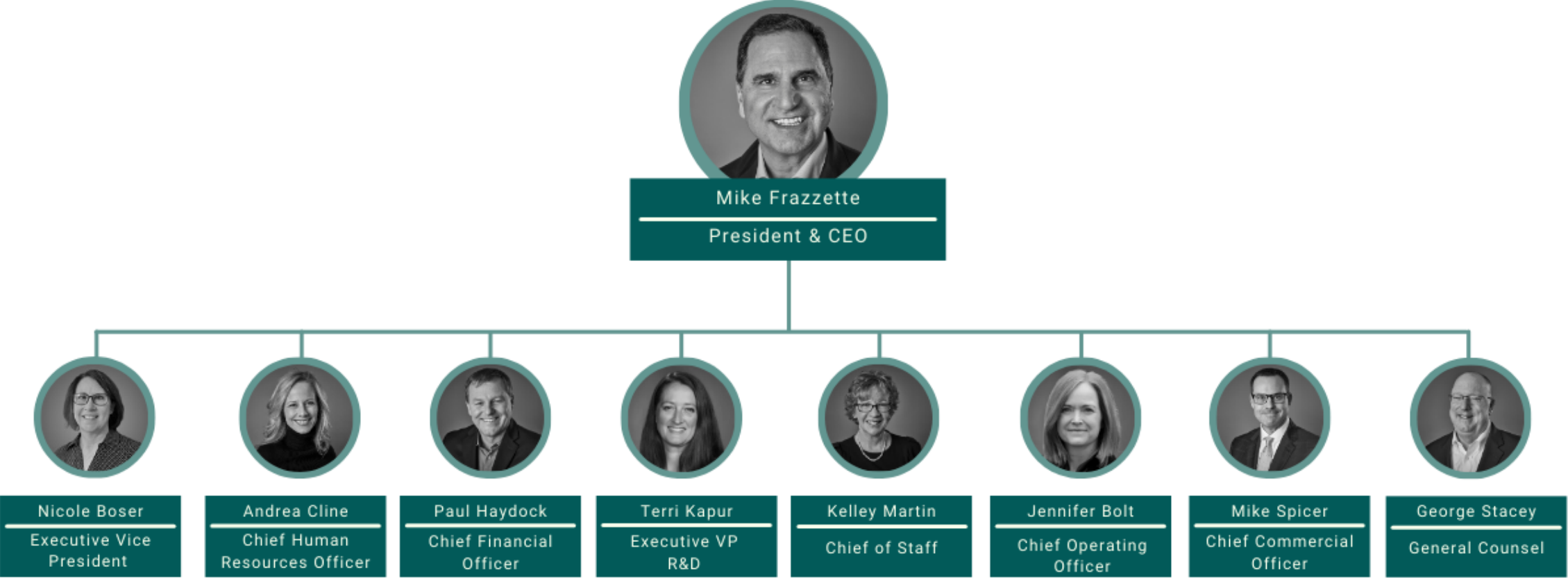
AstraZeneca

BraunAbility

Electrolux

permobil

# Our Executive Team





# Global Business Segments

**UR**<sup>Ⓨ</sup> UROLOGY &  
UROGYNECOLOGY

Lower Urinary Tract  
Symptoms



**GI**<sup>Ⓜ</sup> GASTROENTEROLOGY

Upper & Lower  
Gastrointestinal Disease



**OB**<sup>ⓐ</sup> OBSTETRICS,  
GYNECOLOGY  
& NEONATAL

Labor & Delivery,  
NICU & GYN



# Urology



Leading the market in diagnostic and therapeutics complete care pathway to seamlessly guide patients to better urological health



Pioneers in the market for over 50 years  
in more than 105 countries

Expansive product range to support patients  
throughout the Urology care pathway

Over 5 million urodynamic procedures  
performed with our catheters

# Gastroenterology Portfolio

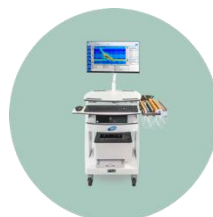


## Next Generation Diagnostic and Interventional Solutions for the Entire GI Tract

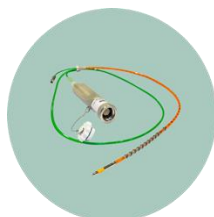


### Diagnostic

Solar™ GI  
High-Resolution  
Manometry



Solid-state Catheters  
for HRM, HRIM and  
HRAM



Ohmega™  
for the Diagnosis of  
GERD



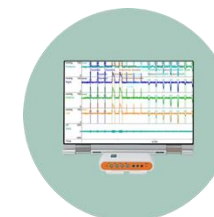
alpHaONE  
Wireless pH Capsule  
Reflux Monitoring System



Gastrogenius™  
Breath Monitor



Solar™ Go Air  
Portable ARM System



### Interventional



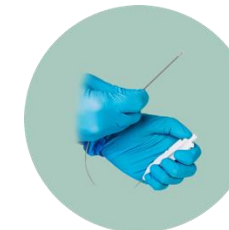
RenovaRP®  
Centesis Management System



Spot® Ex & Spot®  
Endoscopic Tattoo



EverLift®  
Submucosal Lifting Agent



EndoTNeedle  
Endoscopic Injection Needle

# Obstetrics, Gynecology & Neonatal



Focused Exclusively on Labor & Delivery and Neonatal Intensive Care



Helping mothers and babies in more than  
80 countries worldwide

Market leaders with flagship products like the  
Koala® Intrauterine Pressure Catheter and  
Kiwi® Vacuum-Assisted Delivery System

35,000+ devices used per day  
around the world

# Quality & Innovation

Committed to excellence in diagnostics and therapeutics



## Customer-Oriented Innovation



First PC-based  
Urodynamic  
System



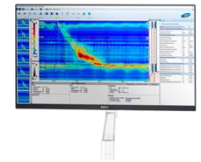
Market-shaping  
labor and delivery  
technology with Kiwi  
and Koala products



Original developer of  
air-charged catheters



First to offer  
sterile endoscopy



Premier of Solar GI and  
London protocol in high-  
resolution anorectal  
manometry



## High-Quality Products, People and Processes



Product safety and  
effectiveness is our  
highest priority



Strive for  
zero defects -  
Rigorous standards  
in all we do

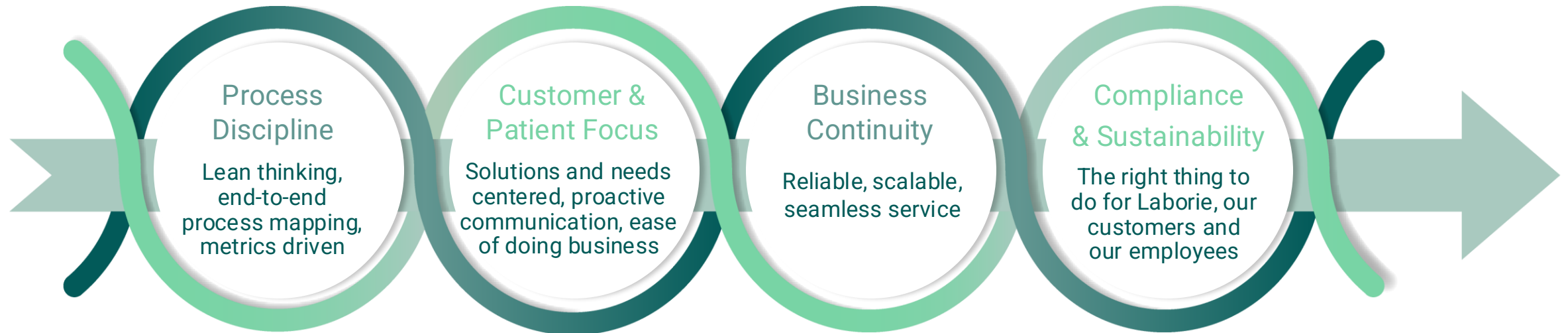


World-class training  
and development of  
global practitioners  
across clinical specialties



# Manufacturing & Distribution

## Accelerating Operational Excellence



## Continuous Improvement to Enhance the Customer Experience

---

The Laborie Way

Dignity  
at the heart  
of everything

