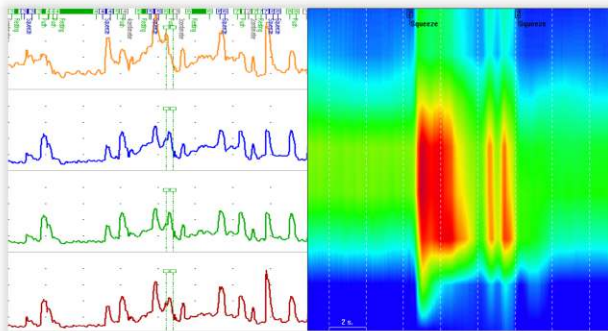
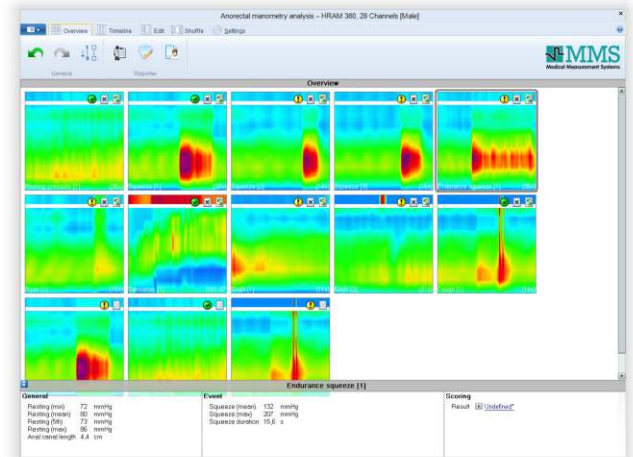


Solar GI HRAM

High Resolution Anorectal Manometry

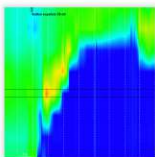
- Contour plot display
- Full coverage of anal sphincter
- Automatic event selection and calculation of results
- Simple correction of catheter movement
- Easy placement of water perfused or solid state catheter
- Single use and reusable catheter solutions



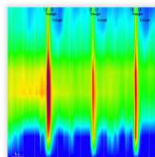
Conventional Manometry versus HRAM

High Resolution Anorectal Manometry (HRAM) is a new approach of measuring anorectal pressures, which offers more information than conventional manometry.

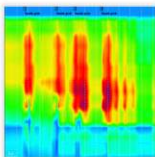
In combination with contour plots, rapid data interpretation can be established due to the recognition of typical anal sphincter patterns.



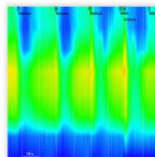
Balloon expulsion



Cough



Sensation test



RAIR



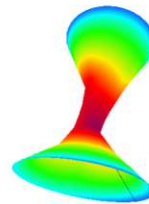
Solar GI HRAM

QuickView makes analysis simple

The unique QuickView software program will help you to analyze HRAM studies in an efficient and easy way. Results will be calculated and marked automatically. Furthermore all events will be displayed on screen automatically, providing a quick overview of the study.

So, more information and easier analysis go perfectly together!

360 degrees HRAM

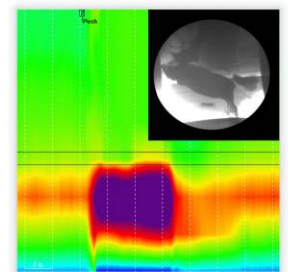


In combination with a dedicated 3-D catheter, HRAM data can also be displayed in a 3-Dimensional plot, providing even more information.

As a result sphincter damage or defects can easily be recognized in the tube view mode.

Defecation combined with X-ray

By adding X-ray images and cine loops to the HRAM pressure measurement you can study defecation in real time.



Push

Water perfused HRAM catheters

Easy to use and cost efficient

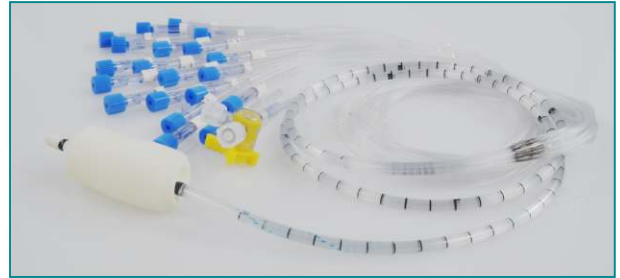
- Water Perfused Manometry has been the world standard for over 40 years
- Single use water perfused catheters need no catheter calibration, temperature acclimation or cleaning
- Reusable water perfused catheters (silicon) are autoclaveable
- Attractive purchase prices and no risk of expensive repairs or cancellation of examinations due to catheter failure
- Automatic balloon filling for RAIR, sensation and compliance test

Single use water perfused HRAM catheters



- 8+1 or 20+1 pressure channels
- 3-D option with 24+1 pressures
- Single use, so no more cleaning
- Latex free balloons

Multi use water perfused HRAM catheters



- 8+1 or 20+1 pressure channels
- 3-D option with 24+1 pressures
- Silicon or PVC
- Latex free balloons
- Customized designs possible

Solid state HRAM catheters

Fast and simple setup

- Reusable solid state HRAM catheters need no study preparations, no calibration and use only one connector for all pressures
- Solid state Manometry has been a proven technique for over 15 years that offers rapid response to measure the true physiological signature
- 8 circumferential pressures and 1 balloon pressure
- 3-D option with 22+1 pressures
- Possibility to add latex free balloons
- Customized designs possible



USA:
Tel.: +1 802 857 1300
Email: usmarketing@laborie.com

EUROPE / INTERNATIONAL:
Tel.: +31 53 480 3700
Email: info@laborie.com

www.laborie.com
www.mms-gi.com

HEADQUARTERS:
Tel.: +1 905 612 1170
Email: marketing@laborie.com

